



1 Unpack, familiarise and check you have the following contents

- 1 SE3IND Noise Warning Sign
- 2 USB memory stick drive
- 3 Microphone and preamplifier – please take care with this part. The microphone is normally plugged directly into the SE3IND
- 4 Short 0.5m microphone extension cable. Generally only used for calibration with an acoustic calibrator (calibrator not supplied as standard).
- 5 110 -240V Power adaptor (with choice of 'plug pins to suit your country).
- 6 **Mini USB to Standard USB Cable**
This cable connects to 'Power adaptor' (item 5) to power the SE3IND. It is also used for connecting the SE3IND to the USB port of a computer (to configure the SE3IND)



Fig 1: Rear view of the SE3IND

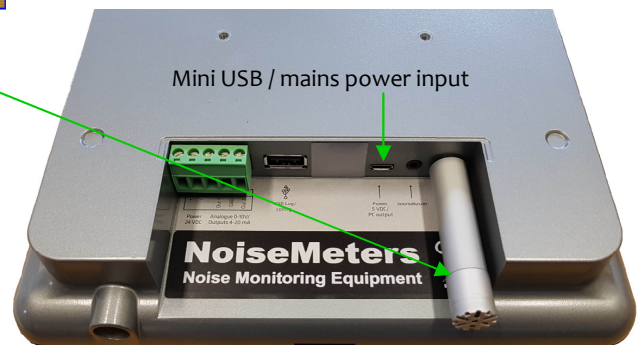


Fig 2: Front View of SE3IND

LED display
Options: decibel level or no display

Manual adjustment buttons
Horizontal to select different options
Vertical to set Threshold Trigger Level

Fig 3: Mini USB end of mains power plugged into the SE3IND



2 Install Software

The software is supplied on a small NoiseMeters USB memory stick (item 2). Save a copy of the USB memory stick contents and then delete the files. This USB stick can be used for downloading data from the SE3IND. Alternatively download from the following link: <https://support.noisemeters.com/downloads/soundear3/>

2.1 Important: Licence information & network / IT dept permissions

The SoundEar3 software does not require a licence so it can be installed on multiple computers at no additional cost.

Networked systems: The SoundEar3 software must be installed with full admin rights. Network permissions / constraints must allow a **USB memory device to be plugged into the users computer**. During installation set 'User access rights' to 'Program data' and 'Data and Reports' Folders . If any of the above are not possible **you must use a 'standalone computer'**.

3 Options to configure SE3IND

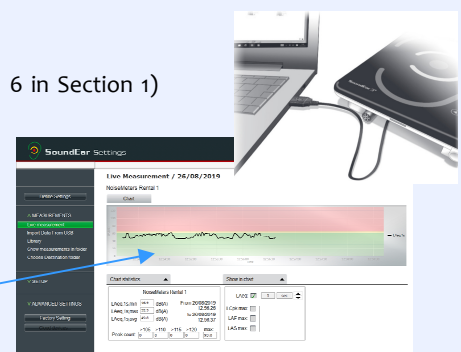
Recommended: Set up the SE3IND using the SoundEar3 software provided.

Alternatively manually create a simple setup using the 'Manual touch keypad buttons' on the SE3IND. This is quick and basic allowing the creation of a simple 'Threshold level', in decibels (dB), for the Red lights and the Amber lights will trigger 5 dB below this.



3.1 Configuration using the SoundEar3 software provided

- 3.1.1 Start the SoundEar3 software on your Windows computer.
- 3.1.2 Take the SE3IND (which should not be powered). Plug the USB cable (item 6 in Section 1) into the SE3IND using the mini USB end (see section 1)
- 3.1.3 Now plug the SE3IND into a standard USB port on your computer using the other end of the USB cable. You should normally hear a sound as Windows detects the USB device. The USB cable will power the SE3IND whilst it also communicates with the SoundEar3 software. The LED display on the front of the SE3IND will then show the current firmware version. A few moments later the display will show '-----' followed by the current sound level in decibels. Once the software detects the SE3IND the time history will be displayed in real time.



3.2 Set the time, threshold trigger levels

3.2.1 Check that the unit is connected (look for green 'connected' icon) and that the time and date of the SE3IND are correct. If the time / date are wrong or no time is displayed please left click in this area to get the software to set the correct time in the SE3IND internal clock (it will be set to your computer's clock)

3.2.2 Left Click on the Define Settings Button to configure the SE3IND

3.2.3 Select the 'Light -Day' TAB and then use the simple slider system to set up threshold levels. You can also alter the reaction time, the parameter the threshold is based on and whether the LEDs just light up or flash.

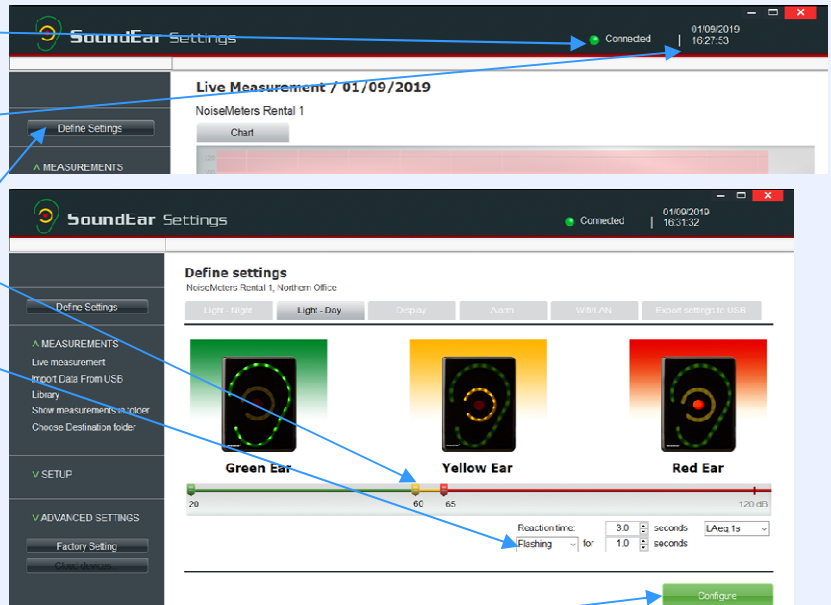
3.2.4 Optional: You can select the 'Light-Night' TAB for different evening / night time configuration.

3.2.5 Select what is displayed in the LED display from the 'Display' TAB and disable the 'manual touch key buttons' on the SE3IND by checking the 'Locked display' box



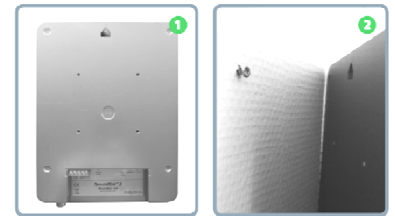
Please note: The 'WiFi/LAN' and 'Alarm' TABs are not options for the standard SE3IND.

3.2.6 Finally - Left click the green 'Configure' box and your settings will be saved to the SE3IND. **Optional:** You can use the 'Export settings to USB' TAB to configure multiple signs using a USB memory stick (rather than individually configuring multiple SE3INDs)



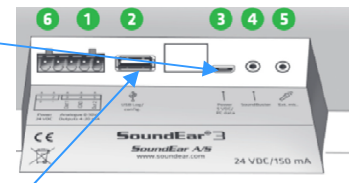
4 Install the SE3IND Check for available power socket nearby or make necessary electrical arrangements. Don't cover the microphone at the base of the SE3IND and avoid placing close to noise absorbing materials. Try to find a 'visible' position at approx 1.8m above floor level on the opposite side of the room from the door and not in a corner.

- 4.1 Fasten a screw (not supplied) securely to the wall using a method suitable for the wall type (i.e. Rawl plug etc)
- 4.2 Hook the SE3IND over this screw. Ensure the microphone should be plugged into socket 5
- 4.3 Power using the mains adaptor / micro USB into socket 3



****** Please ensure you don't leave USB memory stick inserted. The USB stick should only be plugged in when you require to download the data. ******

Optional: A VESA mount is available to purchase, (part no: SE2VESA) allowing the unit to be securely installed and be angled etc

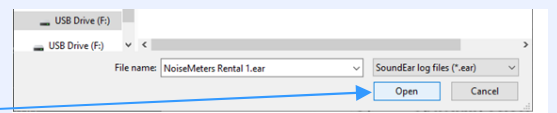
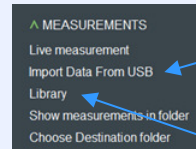


5 Download Noise Data to USB memory stick and import this Data to SoundEar3 software

- 5.1 With the SE3IND still running plug in formatted (FAT 32) USB memory stick (supplied) into Socket 2
- 5.2 The LED display will show a simple sequence followed by a count from 00.1 to 100. The process is complete when the LED display returns to normal.
- 5.3 Remove the memory stick and plug into a computer running the SoundEar3 software (if you were to look on the memory stick using File Explore you would see a .ear file and a csv file. Always use the .ear file to import data into the SoundEar3 software)



- 5.4 From the menu on the Left hand side expand the 'Measurements' section and select 'Import Data from USB'.
- 5.5 A window will appear allowing you to navigate to the 'USB' drive and the .ear file. Click the 'Open' button.



6 View data and create reports

- 1. Select 'Measurements' from the menu then click 'Library'. Select the Device and Dates to view using the drop down menus [Note: suffix for each device (PC) or (Internal) - check the 'Internal' option] The calendar highlights where data is available.
- 2. Click the '-->Show' button to display the data.
- 3. Select 'Show as Chart', 'Show as Hours' or Show as Days' from the pull down menu.

4. Use the report icon at the far right of the Library page to create a variety of reports

